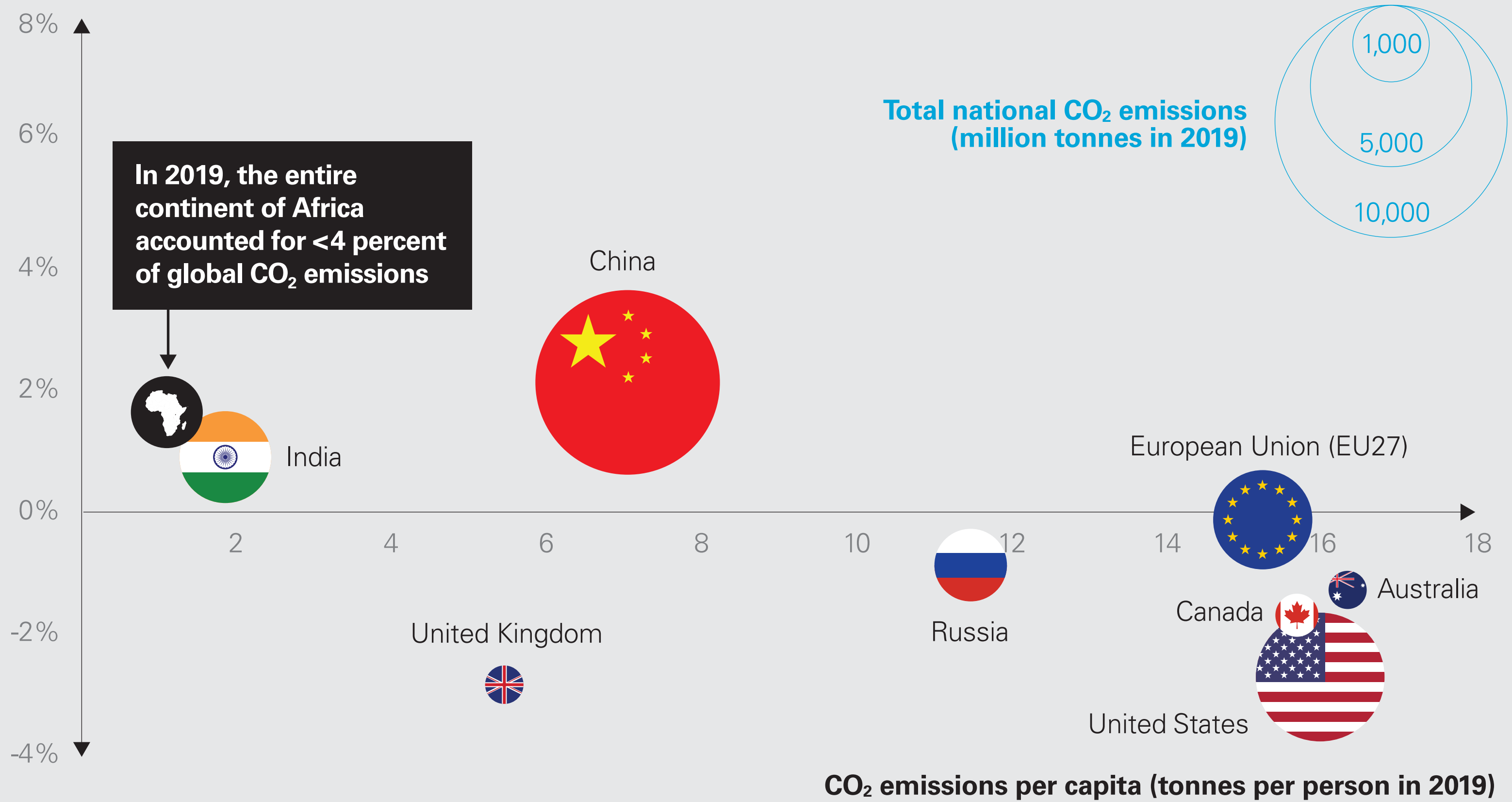


Figure 2. Compared to other regions and countries, Africa's GHG emissions are modest

Growth in CO₂ emissions, 2018 – 2019



Notes: Annual production-based emissions of CO₂ are measured in million tonnes. Growth in CO₂ emissions means annual percentage growth in production-based emissions of CO₂. CO₂ emissions per capita means annual production-based emissions of CO₂, measured in tonnes per head of population, measured in tonnes per person. All three are based on territorial emissions, which do not account for emissions embedded in trade goods.

Source: The Global Carbon Project, reported by Our World in Data