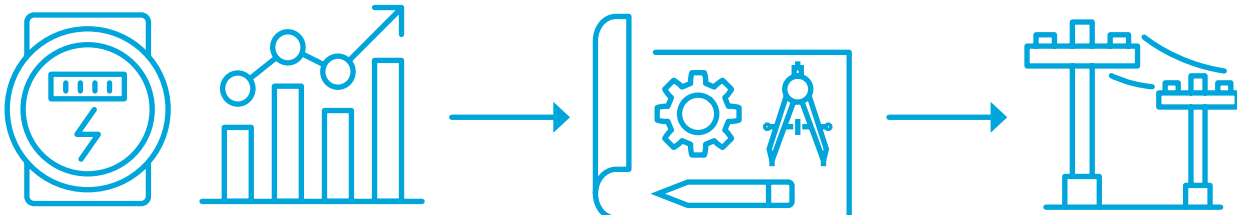


Status quo transmission planning & Consolidated Planning Process (CPP)

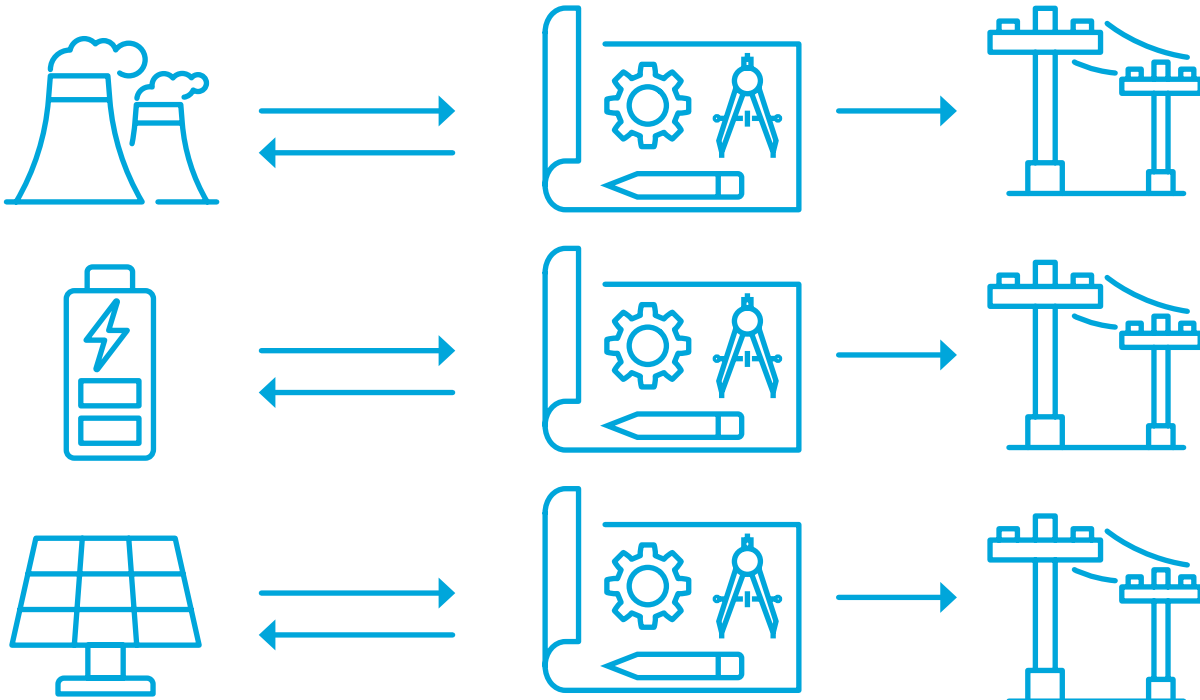
Status quo transmission planning

Plan transmission for demand growth



Demand

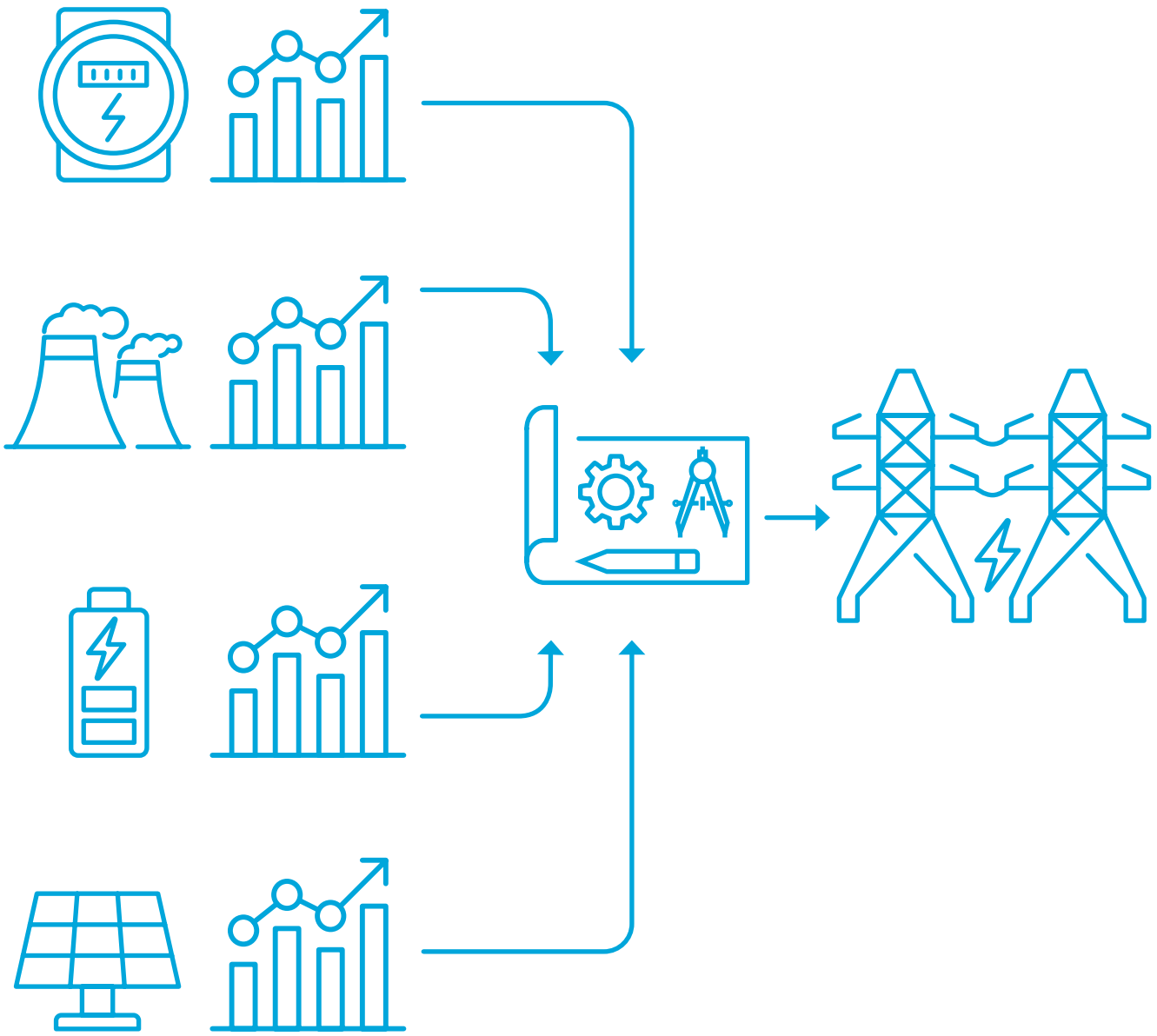
Plan generator grid connections separately through interconnection queue



- ❑ Grid planning for forecasted load growth
- ❑ Separate, piecemeal generator connections
- ❑ Interconnection process takes 3-6 years
- ❑ Uncertainty – 70% of developers abandon

Consolidated Planning Process (CPP)

Plan transmission for demand growth *and* forecasted generator additions



- ❑ Plan for both forecasted load & generation
- ❑ Generators can connect for flat, upfront fee
- ❑ Interconnection process takes under 1 year
- ❑ Developers receive cost & timing certainty